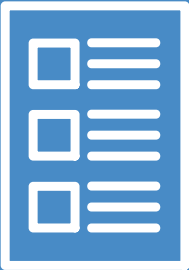


CANVAS TOOLBOX

A GUIDE TO CANVAS TOOLS

~THE BASICS~

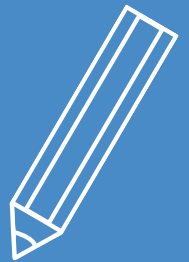


PAGES

Pages are a blank canvas with different formatting options that can be used to provide information, share resources, add customization, or anything for students to view. You can modify a page by typing directly into the text box in Canvas, copy and paste from another document, or add HTML code.

ASSIGNMENTS

Assignments are used for student demonstration of learning. Assignment modifications include title, description, points, group, submission type (attached document, URL, etc), and assignment availability. Assignments can be assigned to an entire class or groups.



QUIZZES

Canvas quizzes can be used to assess knowledge or collect information. There are 4 types of quizzes: point-based quizzes, practice quizzes, graded surveys, & ungraded surveys. Quizzes can have multiple choice, true/false, fill-in, multiple answers, dropdown, matching, numerical, formula, or essay questions.



DISCUSSIONS

Discussions is a platform where students can participate in interactive communication that is facilitated and monitored by an instructor. Discussion posts can include text, embedded files, images, hyperlinks, or videos and can be assigned to the whole class or groups.



MODULES

Modules create the flow of a class. They are used to organize content and guide students towards next steps. Modules can include pages with content or materials, assignments, discussions, quizzes, files, or external links to multimedia. 'Next' buttons are added automatically in modules, so students know exactly where to go.

